

Appendix B: PIRMP Snackbrands Smithfield - Premises

DOCUMENT REVISIONS (PIRMP Update details)

REVISIONS				
Revision #	Reason for & Details of Updates (nature of changes to PIRMP)	Date	Author	Date Updated version Web Site
Old format	Original PIRMP _issued by Absorb	June 2018- April 2020	Richard Stock	Feb 2020
New V1-V6	Drafting Smithfield Current PIRMP into the new guideline issued by NSW EPA _April 2020	April 2020– Sept 2020	Richard Stock	
V7	Update to include changes in contacts, responsibilities. Site maps have also been updated. Risk Assessment descriptions updated.	December 2020	Kate Robinson	
V7	Updates include changes in contacts, responsibilities. Dangerous goods list and location map.	May 2022	Jayna Syal	
V7	Updates include emergency contact and training assessment checklist	March 2023	Jayna Syal	

APPROVALS

Title	Signature	Date
Environmental Regulatory Officer	DocuSigned by: <i>Jayna Syal</i> 82F7DB8360504D5...	12/4/2023
Smithfield Site Manager	DocuSigned by: <i>Darryl Malton</i> 500AB7211F7F49D...	12/4/2023
HO of Health, Safety & Environment	DocuSigned by: <i>Jackie Vrljicak</i> 5C312CED183D496...	27/4/2023
Director of Operations & Supply Chain	DocuSigned by: <i>Jeff Wall</i> 07882C015DA24C6...	27/4/2023

POLLUTION INCIDENT RESPONSE MANAGEMENT PLAN**LICENCE NUMBER: EPL 21202****Approved by: Jackie Vrljicak****Signature: Jackie Vrljicak****Position/Title: HO Health, Safety & Environment****Date: 30/03/23****PURPOSE:**

SNACK BRANDS INDUSTRIES PTY LIMITED ACN 054 045 662 and SNACK BRANDS FOODS PTY LIMITED ACN 079 719 716 trading as SNACK BRANDS AUSTRALIA ABN 38 424 554 643 holds an Environment Protection Licence with the NSW Environment Protection Authority (EPA) for Smithfield Manufacturing Site 15-21 Britton Street Smithfield NSW 2164. As per the *Protection of the Environment Operations Act 1997* (the POEO Act), the holder of an Environment Protection Licence must prepare, keep, test and implement a pollution incident response management plan (PIRMP) that complies with Part 5.7A of the POEO Act in relation to the activity to which the licence relates.

If a pollution incident occurs in the course of an activity so that material harm to the environment (within the meaning of section 147 of the POEO Act) is caused or threatened, the person carrying out the activity must **immediately** implement this plan in relation to the activity required by Part 5.7A of the POEO Act.

A copy of this plan must be kept at the licensed premises and be made available on request by an authorised EPA officer and to any person who is responsible for implementing this plan.

Parts of the plan must also be available either on a publicly accessible website, and/or by providing a copy of the plan to any person who makes a written request. The sections of the plan that are required to be publicly available are set out in clause 98D of the Protection of the Environment Operations (General) Regulation 2009.

NOTE: This plan must be developed in accordance with the *Protection of the Environment Operations Act 1997* and the Protection of the Environment Operations (General) Regulation 2009.

Licencees should also refer to the EPA's *Guideline: Pollution incident response management plans*.

Duty to notify pollution incidents

There is a duty to notify 'relevant authorities' as specified in section 148(8) of the POEO Act (**the EPA, local authority, Ministry of Health, SafeWork NSW (formerly WorkCover) and Fire and Rescue NSW**) of pollution incidents where material harm to the environment is caused or threatened.

Definitions:

Pollution Incident: An incident or set of circumstances during or as a consequence of which there is or is likely to be leak, spill or other escape or deposit of a substance, as a result of which pollution has occurred, is occurring or is likely to occur. It includes an incident or set of circumstances in which a substance has been placed or disposed of on a premises, but it does not include an incident or set of circumstances involving only the emission of any noise.

Material Harm: includes actual or potential harm to the health or safety of human beings or to ecosystems *that is not trivial* or that *results in actual or potential loss or property damage of an amount over \$10,000*.

Loss: the reasonable cost and expenses that would be incurred in taking all reasonable practicable measures to prevent, mitigate or make good harm to the environment

Relationship with other Emergency Plans: to be read in conjunction with:

WHS_PR_07_004S – Emergency Procedures Manual _ Smithfield 1

WHS_PR_07_001 – SBA Emergency Management and Preparedness

Environment Protection Licence (EPL) Details

Name of licensee: SNACK BRANDS INDUSTRIES PTY LIMITED ACN 054 045 662 and SNACK BRANDS FOODS PTY LIMITED
(including ABN) ACN 079 719 716 trading as SNACK BRANDS AUSTRALIA ABN 38 424 554 643

EPL number: 21202

Premises name and address: Snackbrands Smithfield Manufacturing Site 15-21 Britton Street Smithfield NSW 2164 Lot 1 DP 597082
Site Location: **Latitude:** -33.842048 **Longitude:** 150.939573

Company or business contact details
Contact Name: Jackie Vrljicak
Position or title: Head of Health, Safety & Environment
Business hours contact number/s: 0427003513
After hours contact number/s: 0427003513
Email: jackie.vrljicak@snackbrands.com.au

Website address: <https://www.snackbrands.com.au>

Scheduled activity/activities on EPL: General Agricultural Processing

Coordinating with persons

Identify the procedures to be followed for coordinating with the authorities or persons who have been notified.

When a pollution incident occurs on site

1. **Phase 1:** Immediately engage in harm minimisation measures / spill containment as per procedures documented in the site Emergency Response Plan (ERP) or Pollution Incident Response Management Plan (PIRMP) .
2. If the incident presents an **immediate threat to human health or property contact emergency services on 000 immediately**
3. **Phase 2:** Assess the level of actual or potential pollution and decide whether the incident is a 'notifiable' incident.
4. **Phase 3:** If the incident is considered 'notifiable' the following agencies must be notified immediately
5. If the incident impacts the community undertake telephone contact as outlined

Pollution incident – person/s responsible

Contact details must include the names, position titles and 24-hour contact details. Details are to include alternative person/s, should the primary contact be unavailable.

Phase 1 :PIRMP activation

Contact Name: Darryl Malton
Position or title: Smithfield Site Operations Manager
Business hours contact number/s: (02) 98319216
After hours contact number/s: 0400557462
Email: Darryl.malton@snackbrands.com.au

Contact Name: Diego Fuentes
Position or title: Site Engineering Manager
Business hours contact number/s: 0475799766
After hours contact number/s: 0475799766
Email: diego.fuentes@snackbrands.com.au

Contact Name: Doaa Ali
Position or title: Manufacturing Manager _1
Business hours contact number/s: 02 96090453
After hours contact number/s: 0451780187
Email: doaa.ali@snackbrands.com.au

Pollution incident – person/s responsible, continued**Phase 2: Managing response to pollution incident**

Primary person Responsible: Darryl Malton
Position or title: Smithfield Site Operations Manager
Business hours contact number/s: (02) 98319216
After hours contact number/s: 0400557462
Email: Darryl.malton@snackbrands.com.au

Secondary Name of person responsible: Diego Fuentes
Position or title: Maintenance & Engineering Manager Smithfield
Business hours contact number/s: 0422456120
After hours contact number/s: 0422456120
Email: diego.fuentes@snackbrands.com.au

<p>Phase 3 : Notifying relevant authorities</p> <p>Notification should be made by a person with an appropriate level of authority within the company.</p>	<p>Contact Name: Jackie Vrjicak</p> <p>Position or title: HO of Health, Safety & Environment</p> <p>Contact number/s: 0427003513</p> <p>Email: jackie.vrjicak@snackbrands.com.au</p>
--	--

Phase 3 : Notification of relevant authorities

Identify any persons or authorities required to be notified as per Part 5.7A of the POEO Act in the case of a pollution incident that causes or threatens to cause material harm to the environment. **Relevant authorities include:**

Emergency Services		000
Fire & Rescue NSW / Rural Fire Service		9622-8932
EPA – Operation Officer EPA – General Contact	Rajesh Mottey (Rajesh.Mottey@epa.nsw.gov.au)	9995-6563 131-555 9995-5555
NSW Health- Western Sydney LHD NSW Health- General Contact - Westmead Hospital See www.health.nsw.gov.au/Infectious/Pages/phus.aspx for local contact details.	Helen Noonan (Helen.Noonan@health.nsw.gov.au)	9840-3603 9845-5555

SafeWork NSW		131-050
Local authority/s		
Cumberland Council	Haralambia Katsifis (Haralambia.Katsifis@cumberland.nsw.gov.au)	8757-9000
Any other identified organisation or agency requiring notification (if applicable)		
Sydney Water NSW- Troy Carruthers, Jason Najm Sydney Water NSW- General Contact	TROY.CARRUTHERS@sydneywater.com.au jason.najm@sydneywater.com.au	0409 987 292 0484 275 145 132-090
Spill mitigation		
Large volume spill – Veolia	After Hours Larry Sutton	0438 651 306 132 955
Approved Hazardous Contained Waste Removal – Veolia	Praneesh.Chand@Veolia.com	0419 477 126
Approved Hazardous Contained Waste Removal – Chem waste		1300 688 011
Secom Securities – Smithfield Site Security		1300 360 535

Phase 4 Notification of neighbours and the local community

Identify owners or occupiers of premises in the vicinity of the licensed premises, including any sensitive premises (e.g. schools, preschools, hospitals, nursing homes):

Neighbour	Name	Address	Telephone Number
Nearby Property (North)	OX Engineering Group		
Nearby Property (East)	C & S Logistics	54/28 Percival Rd, Smithfield, NSW 2164	97565344
Nearby Property (West)	Charles Heath Industries	18 Britton St, Smithfield, NSW 2164	96096000
	PCA	16 Britton St, Smithfield, NSW 2164	87885588
	Givaudan Australia P/L	12 Britton St, Smithfield, NSW 2164	98274000
Nearby Property (South)	Harris Customs	3 Britton St, Smithfield, NSW 2164	0416797976
	EZI Security Systems	3 Britton St, Smithfield, NSW 2164	1300558304
	Hydrosteer	3 Britton St, Smithfield, NSW 2164	1300010338
Nearby Property (Down Stream)	Southern Global Importers	3 Tait Street, Smithfield, NSW, 2164	97292275

Key High-Risk Community Stakeholders

Stakeholder Component	Name	Address	Telephone Number
School	Sherwood Grange Public School(2.0km)	Bruce Street, Merrylands West NSW 2160	96329447
School	Guildford West Public School(2.3km)	Palmer St, Guildford West NSW 2161	(02) 9632 9942
School	Merrylands High School(2.4km)	Bristol St, Merrylands NSW 2160	(02) 9632 9401

Details of how the neighbours will be informed of the incident, including early warnings and regular updates (e.g. door knock, phone call, emergency alert):

By phone call

Communicating with neighbours and the local community

Communicating with Neighbours – Actions to be taken:

1. Site Manager upon becoming aware of a notifiable pollution incident assesses the severity of the incident with regard to impact on neighbouring properties
 - a. Consider the following
 - i. Does the pollution incident have the potential to affect one or more neighbouring properties?
 - ii. How will it affect them (including long- and short-term effects)?
 - iii. What actions need to be taken by the neighbouring properties to protect them from harm?
 - b. Site Manager contacts the Sustainability and Environmental Advisor within one hour of the incident occurring and informs of the incident & possible impact on neighbouring properties
2. Site Manager or designate contacts the neighbouring properties deemed necessary and provides them with the following information relevant to the pollution incident:
 - a. What has happened?
 - b. Any Health and Safety implications for them
 - c. Corrective Actions which have been activated to minimise the harm/prevent further harm
 - d. What to expect?
 - e. Further contact based on future updates

f. Site Manager contact details for further queries/concerns

- 3 The Sustainability and Environmental Advisor liaises with the Director Supply Chain / ELT and provides the Site Manager on other communication strategies to be employed to inform nearby properties and the wider community of important information related to any incident as a result of the environmental incident

Description and likelihood of hazards

Provide a description of the hazards to human health or the environment associated with the activity to which the licence relates:

The Site Activities in the manufacture of snack-foods has the following associated hazards:

- Emissions to Air
- Storm Water and Liquid Spills
- Dry Waste: Product, Agricultural Processing Offal and General Waste
- Impact on Flora & Fauna

Environmental Hazard and Impact Register

Key Environmental Hazard	Risk			Mitigation measures	Revised Risk			
	L	C	R		L	C	R	
Emissions to air								
1	Excessive dust emissions	Unlikely	Minor	V Low (5)	Mechanical sweeping of yards Stop dust generating activities as necessary	Unlikely	Minor	V Low (5)
2	Noise	Likely	Insignificant	Low (7)	Noise Emissions tested ; All equipment serviced and maintained in standard	Possible	Insignificant	V Low (4)
3	Health Issues off site	Rare	Minor	V Low (3)	All liquid waste treated and discharged to sewer. All solid waste segregated. Putrescible solid waste treated off site by Licensed Contractor.	Rare	Moderate	V Low (6)

4	Odour	Possible	Minor	Low (8)	Food Waste Skip closely managed to ensure they are covered and emptied as scheduled Stack emissions highly diluted with ambient air Waste Water Treatment plant maintained (aeration SBRs)	Unlikely	Minor	V Low (5)
5	Equipment exhaust emissions exceed limits (Odour /VOC/ /Particle Size)	Possible	Minor	Low (8)	Emissions from fryer stacks tested and within standard All equipment is serviced and maintained FFA levels measured & controlled in Frying oil Excessive equipment emissions to trigger out of service procedures	Unlikely	Minor	V Low (5)
Storm water / Liquid spills								
1	Groundwater contamination	Unlikely	Moderate	Low (9)	Implement Monitoring and response Plane Ensure storage, handling and transport of dangerous goods are conducted in accordance with Australia, Standards and WHS Legislation Identify, classify, quantify & appropriately store hazardous waste Develop & implement oil & fuel spillage controls Ensure hazardous waste is minimised Licenced contractors to remove hazardous waste from site Keep records of all hazardous waste movements Implement bunding to appropriate areas as required Ensure adequate spill kits are available on site including adequate training Minimise hazardous waste storage quantities on site	Rare	Moderate	V Low (6)
2	Discharge of sediment	Possible	Moderate	Low (13)	Develop & implement Storm Water Management Plan Install and maintain Drains & shutoff valves Review routine inspections result quarterly & action as necessary Develop & implement surface & groundwater response plan	Unlikely	Moderate	Low (9)
3	Discharge of hazardous materials or process liquids	Possible	Major	Medium (18)	Where emergency storm water isolation valve installed test for effectiveness Ensure storage, handling and transport of dangerous goods are conducted in accordance with relevant Australian Standards Identify classify, quantify & appropriately store hazardous waste Develop & implement oil & fuel spillage controls Implement bunding to appropriate areas and routinely test for integrity Ensure adequate spill kits are available on site including adequate training for effective use Minimise hazardous waste storage quantities on site & Ensure use Bunding Appropriate location of hazardous materials storage areas to prevent off-site discharge	Unlikely	Major	Low (14)

4	Spill of liquid whilst in storage ingredients, chemical or wastewater	Possible	Moderate	Low (13)	<p>Liquid stored according to Australia Standards bunding requirements.</p> <p>Measures in places to ensure spills do not leave site boundaries ie diverting flow away from boundaries, stormwater drains. Adequate spill kits, drain seals, storm water isolation valves.</p> <p>Bunding, spill kits, drain seals and isolation valves submitted to regular inspection and maintenance</p>	Unlikely	Moderate	Low (9)	
4	Spill during delivery of fuels or liquid ingredients to storage tank	Possible	Moderate	Low (13)	<p>Suppliers transfer procedure is known and approved</p> <p>Operators supporting unloading trained to SOP</p> <p>Transfer is supervised against SBA/ Suppliers procedures</p>	Unlikely	Moderate	Low (9)	
5	Improper storage and handling of liquid wastewater	Likely	Moderate	Medium (17)	<p>Ensure water leachate is contained on site;</p> <p>Control Quantities and treatment outcomes to the specified Sydney Water Consent Agreement</p> <p>Location of storage close to processing point</p> <p>Waste materials are managed in accordance with approval conditions</p> <p>Excess waste materials are disposed of in accordance with legislative requirements</p> <p>Ensure WWTP equipment is serviced & maintained so will conform to the required operating specifications.</p> <p>Ensure suitable coverage and training by and of Waste Treatment Plant Operators</p>	Unlikely	Moderate	Low (9)	
6	Land contamination	Possible	Moderate	Low (13)	<p>Ensure high risk areas of site are sealed and in good condition</p> <p>No storage of liquids or equipment on unsealed surfaces.</p> <p>All Hazardous materials to be stored in bunds or Dangerous storage cabinets</p>	Unlikely	Moderate	Low (9)	
Dry Waste: Product, Agricultural Processing Offal and General Waste									
1	Improper storage of Dry waste	Almost certain	Minor	Low (10)	<p>Ensure Signage to identify Waste type</p> <p>Ensure Waste Bins where practical covered or enclosed to stop Native Birds- Ibis & Animals -possums; Rodents</p> <p>Clean up Spillages around bins- implications for Stormwater</p>	Likely	Minor	Low (7)	

		Possible	Major	Medium (18)	Registers & contracts setup to ensure Disposal by Registered / Licensed Contractors	Unlikely	Major	Low (14)
Impact on Native flora and Fauna								
1	Damage to site fauna	Likely	Minor	Low (12)	Ensure measures devised to prevent native fauna occupying site – especially birds. Cover food waste skips and clean up solid spills Trap and relocate as required (e.g. Possums) Ensure all doors to Factory Facilities are closed	Unlikely	Minor	V Low (5)
2	Restrict weeds growing on site	Possible	Insignificant	V Low (4)	Ensure all declared or restricted weeds are removed from site as part of ground maintenance	Unlikely	Insignificant	V Low (2)

Pre-emptive actions to be taken

Provide detailed descriptions of the pre-emptive actions to be taken to minimise or prevent any risk of harm to human health or the environment arising from the activities undertaken at the premises:

- Training for the Handling of Dangerous Chemicals
- The development & documentation and the yearly refresher of PIRMP training, around a simulated spill.
- Bunding of storage tanks and IBCs
- Development, use and maintenance of Standard Operating Procedures
- Environmental Documentation stored and available for reference & revision on the Quality Management System Intranet system
- The use of Alarms (Audible and/or Red Flags on control screens)
- OH&SE audits
- Risk matrix identification and mitigation
- Check-sheets to enforce critical actions

Inventory of pollutants

Provide an inventory of potential pollutants on the premises or used in carrying out the activity to which the licence relates:

Identify the maximum quantity of any pollutant/s likely to be stored or held at locations (including underground tanks) at or on the premises to which the licence relates.

Dangerous Goods Descriptions and Hazards		
Class	Description	Hazards
2	Non-Flammable, Non Toxic Gases	Gases are capable of posing serious hazards due to their flammability, potential as asphyxiates, ability to oxidize and/or their toxicity or corrosiveness to humans
2.1	Flammable Gases	
8	Corrosives	Corrosives cause severe damage when in contact with living tissue or, in the case of leakage, damage or destroy surrounding materials

Chemical Storage

Wastewater Treatment External Chemical Storage- DG 8,7,6,5

Storage Area	Shipping Name	Activity Level w/w %	UN No	Class-Division	PG	Type of Storage	Container Size	Max Quantity
DG7	Sodium Hydroxide	48-50	1824	8	II	AGT	10,000ltrs	10,000ltrs
DG5	Sodium Hypochlorite	Chlorine 10.4 -13.3	1791	8	III	IBC	1,000ltrs	2,000ltrs
DG4	Citric Acid	% w/v 49- 52	1760	8	II	IBC	1,000ltrs	2,000ltrs
DG4	Japac 23		n/a	n/a	n/a	IBC	1,000ltrs	2,000ltrs

Wastewater Treatment External Chemical Storage - DG 4

Storage Area	Proper Shipping Name	Activity Level w/w %	UN No	Class-Division	PG	Type of Storage	Container Size	Max Quantity
DG4	Sulphuric Acid	68-72	2796	8	II	IBC	1,000ltrs	2,000ltrs

Sanitation Storage Shed - DG2

Storage Area	Proper Shipping Name	Activity Level w/w %	UN No	Class-Division	PG	Type of Storage	Container Size	Max Quantity
DG2	Ultra Max Multi Clean		1824	8	II	PC	15ltrs	11ltrs
DG2	XY12		1791	8	II	PC	15ltrs	13ltrs
DG2	Ultra Dry		1824	8	III	PC	15ltrs	13ltrs

Storage Area	Proper Shipping Name	Activity Level w/w %	UN No	Class-Division	PG	Type of Storage	Container Size	Max Quantity
DG2	Guardian Multi		1824	8	II	PC	15ltrs	13ltrs
DG12	Topax		3266	8	II	PC	200ltrs	1ltrs
DG13	Super Stone Kleen		2031	8	II	BPB	200ltrs	1ltrs
DG13	Topax 625		3266	8	II	PC	25ltrs	4ltrs
PC Heat Exchange Room -DG1								
DG1	LC-50		1824	8	II	AGT	3,000ltrs	3,000ltrs
Nitrogen Tank -DG9								
DG9	Nitrogen Refrigerated Liquid		1977	2	II	Cylinder	10,000ltrs	10,000ltrs
NOTE Storage abbreviations: AGT -Above Ground Tank IBC -Intermediate Bulk Container PC -Plastic Container BPB – Blue Plastic Drum								

Describe the safety equipment or other devices used to minimise the risks to human health or the environment and to contain or control a pollution incident:

Devices and Safety Equipment	
Personal Protection Equipment	
PPE	When handling hazardous chemical, employees have access to PPE which includes the use of the following: <ul style="list-style-type: none"> Gloves /Face field /Chemical resistant & protective Clothing & Footwear
Safety Showers & Eye Wash Stations	If an individual is contaminated with a hazardous material they can access shower or eye wash stations to mitigate chemical ingress <u>Refer to Figure 2</u> : The Site has nominally eight (8) stations distributed at the high risk areas
Material Containment systems	
High Sided Plastic IBC bunds	For storage, separation and containment of hazardous chemicals stored in IBCs
Portable pallet bunds	For the storage and containment of Containers and Drums of materials such as Cleaners /Sanitisers
Fixed Concrete Bunds	Storage and Containment of Above Ground Tanks of Sodium Hydroxide /Caustic Cleaners and Virgin and Waste Vegetable oil
Storm Water Isolation Valves (North & South)	Isolation valves so that if spills occur the stormwater system can be closed to retain contaminated fluids at the Smithfield facility so protecting waterways and environs North side – nearest Ox-Engineering South side – nearest Harris Customs Stormwater drains fitted with drain filter covers (as required) and labelled highlighting links to local creeks & waterways
Bags filled with Sand	To build retention walls/ barriers to aid in the containment of a major spill
Spill kits	Kits containing Absorbent materials to contain spills Hazchem (Yellow) Absorbent Pads & Booms and/or Granules Oil / Fuel (White) Absorbent Pads & Booms and/or Granules
Portable Pump out station interchangeable 1000litre capacity	Portable pumping station that is designed to be chemically resistant which can be used to remove and safely transfer materials from damaged tanks/IBC / Drums to fully contained vessels. Its use has been shown to aid in the containment of leaks/ spills so reducing impact on the environ.
Dangerous Goods (DG) Cabinets	Are an important control measure and are specifically designed to keep chemicals and other hazardous materials safe and secure. Specific cabinets are designed for specific hazardous material and it's important to match the material to the storage cabinet. It is important to classify the hazardous materials (using the MSDS) and avoid storing incompatible materials together. <u>Refer to Figure 2</u> : the Site has nominally eleven (11) DG cabinets distributed in areas where hazardous chemicals such as <i>Class 8 - Corrosives</i> are used & stored.

Treatment systems	
Anti-pollution gear (KHS) on fryers	Fryer exhaust containing water vapor, cooking oil, odours and particulates passes through an Oil Mist Eliminator in the fryer stack and enters KleenHeat Exchange (KHS). The simple afterburner technology connects to the fryer exhaust stack and incinerates virtually all odours, oil & Volatile organic compounds (VOC) and particulates (TSP). Testing to validate performance every 3 years
Wastewater Treatment	The Primary treatment using a pH controlled Dissolved Air Flocculation (DAF) unit , coupled with the Secondary treatment using dissolved oxygen in Sequence Batch reactors (SBR) which significant reduces, Total Dissolved Solids (TDS) Suspended Solids (SS) , Biological Oxygen Demand (BOD) & Ammonia to the agreed levels outlined in the Sydney Water Consent Agreement , Testing to validate performance every month
Procedures & Employee Training	
Specific Documents	<p>The following documents formalize requirements to support and ensure Environmental Protection and compliance to EPA license requirements:</p> <ul style="list-style-type: none"> • Environmental Policy Material Safety Data Sheets (MSDS) • Emergency Procedure Manual • Stormwater Management Plan including maps showing stormwater drains and flow • Waste Management Plan • Pollution Incident Response Management Plan • Contractors for Waste / Recycle Service Agreement
Specific Training	<p>The following training courses are undertaken to ensure employees are aware of correct actions to take in Hazard analysis , handling chemicals and PPE use , mitigating /containing Spills and Evacuation protocols :</p> <ul style="list-style-type: none"> • Hazard /Risk Training & Analysis • Chemical Handling & PPE use • PIRMP training and Simulation • Use of the Chemical resistant Portable Pumping Equipment with interchangeable 1000litre IBC- Critical • Evacuation Training and Simulation

Minimising harm to persons on the premises

Identify the arrangements for minimising the risk of harm to any persons who are on the premises or who are present where the scheduled activity is being carried out:

- Activation of evacuation procedures, including the activation of audible alarms to notify the evacuation of personnel to assembly areas. These clearly communicated to site personnel via signage which are reinforced during induction and simulated evacuation training
- The availability and use of PPE
- The availability and use of Spill kits
- Requirement that contractors to complete OH&SE sign-on – inductions
- All Persons to complete formal CoVID declarations & acknowledge site requirements to mitigate
- Contractors/Site personnel complete risk assessments / JSA (job safety analysis) & hot work permits before undertaking works

Maps

Provide a detailed map (or set of maps) showing the:

- location of the premises to which the licence relates- [Figure 1](#)
- surrounding area likely to be affected by a pollution incident- [Figure 2](#)
- location of potential pollutants on the premises - [Figure 3 & Figure 5](#)
- location of any stormwater drains on the premises- [Figure 4](#)

It is also recommended the position of any discharge points or any other useful information be included on the map/s, and that any important details on the map are labelled (e.g. the nearest water course or water body that stormwater drains located on the premises discharge to).

Premise related to License no. 21202 is the area occupied by Lot 1 DP 597082 as shown below

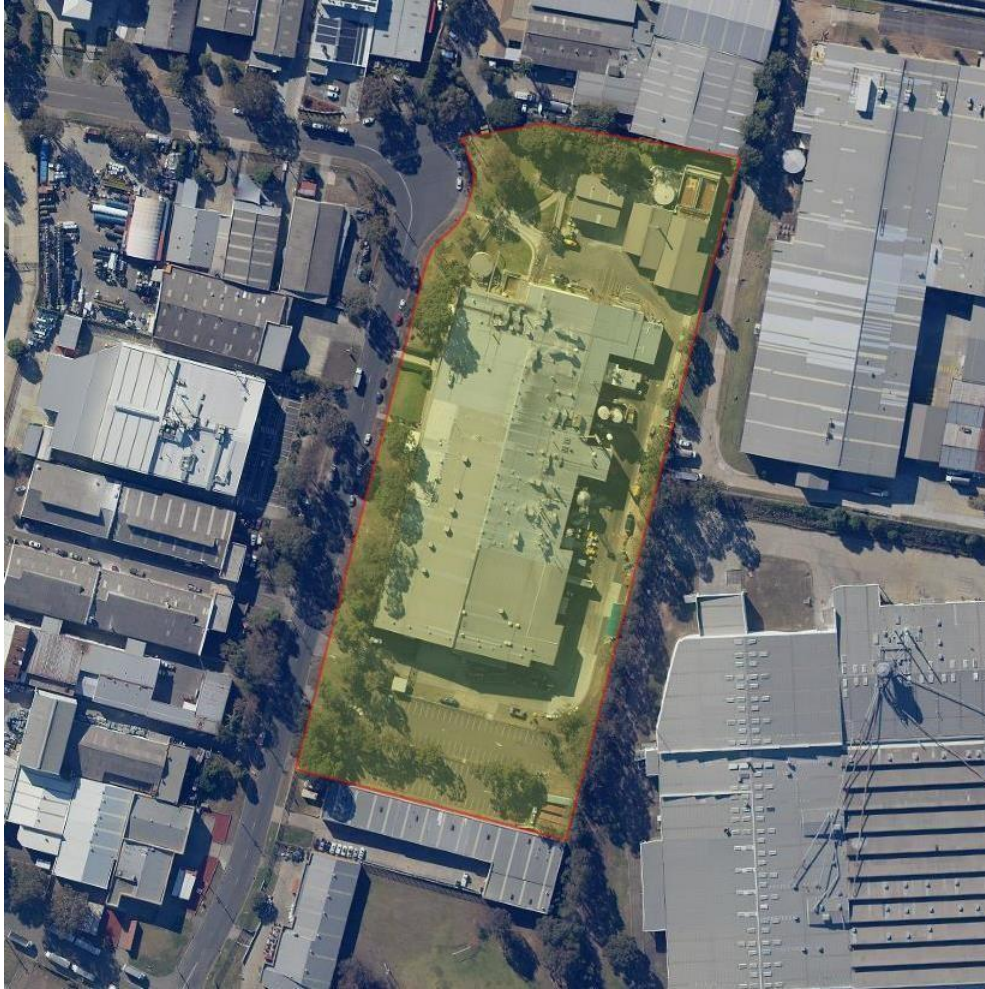


Figure 1. Street Directory Map

Site Address: 15-21 Britton Street, Smithfield NSW 2164

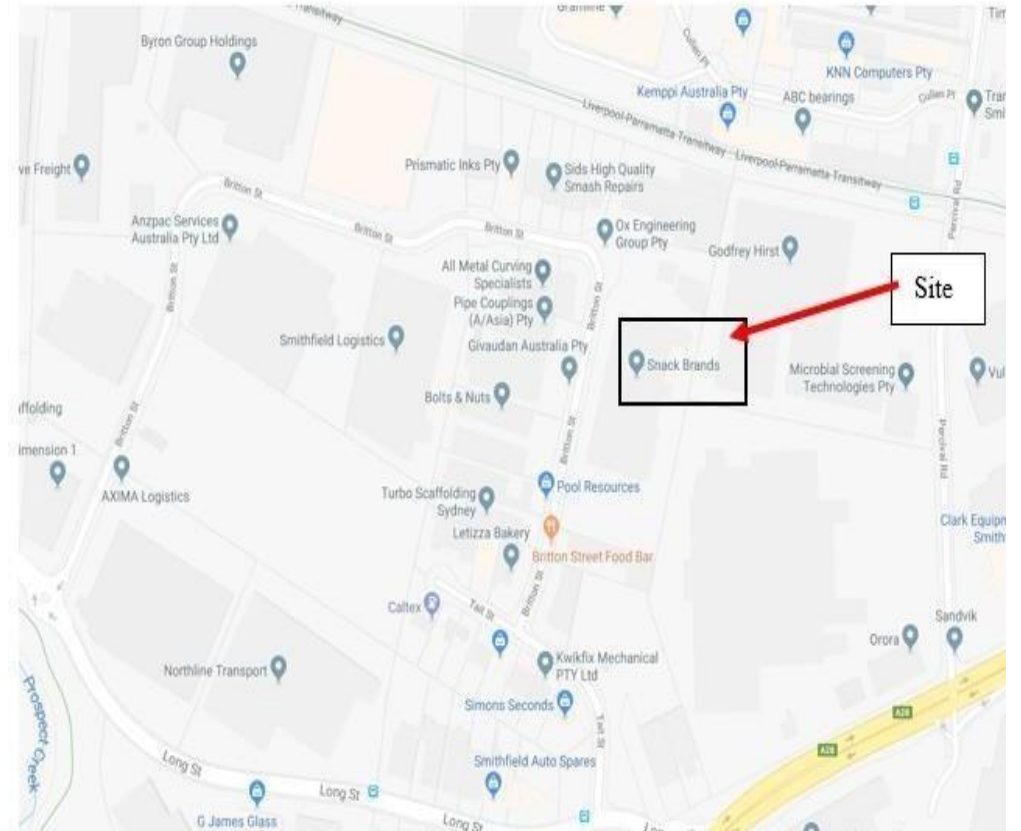
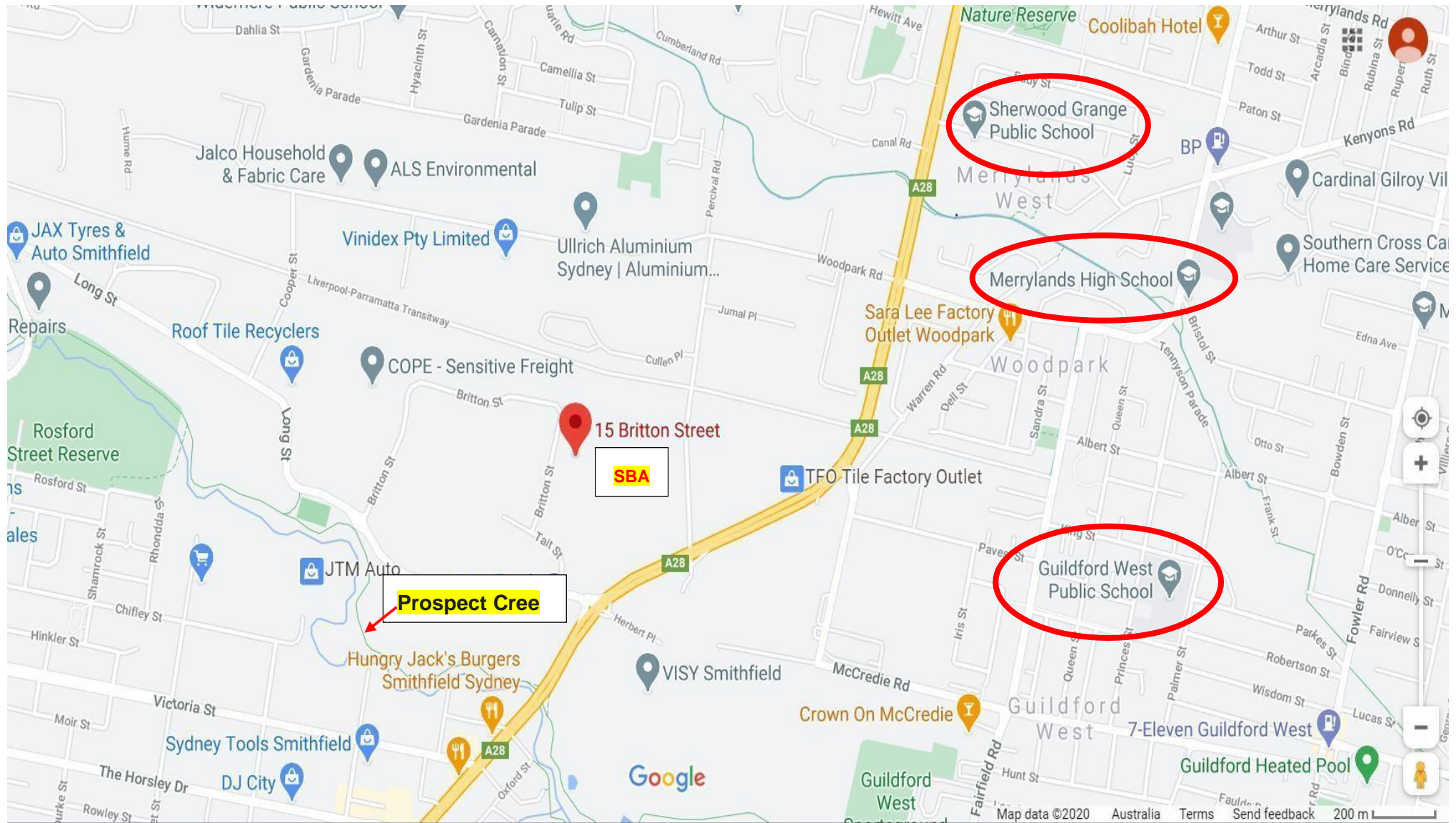


Figure 2 – Location of Snackbrands to relevant critical risk items



THIS PAGE IS LEFT BLANK INTENTIONALLY
